

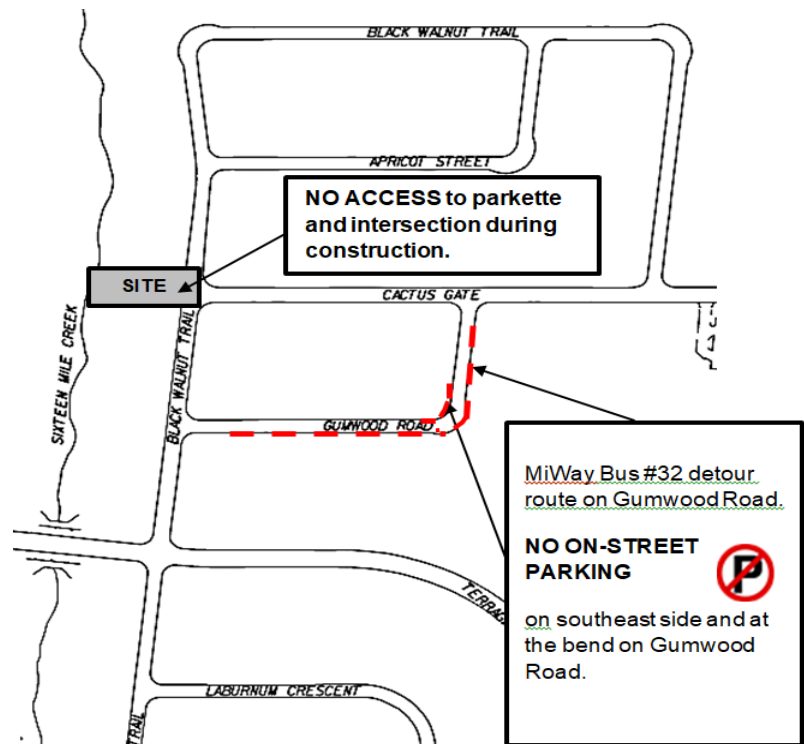
February 14, 2020

Lisgar District Utility Trench Dewatering and Foundation Drainage Collector (FDC) Pumping Station - Phase 2 Work -

Construction Work: On or after **February 24th** to **July 31st**, 2020

The City of Mississauga will begin phase 2 of the underground pumping station construction in your community.

To work will require closure of the intersection at Black Walnut Trail and Cactus Gate, starting in the week of February 24th.



Road / Pedestrian Restrictions

- The intersection of Black Walnut Trail and Cactus Gate will be closed for traffic. Access to all home driveways will be maintained.
- The trail inside the parkette will continue to remain closed throughout the construction. Signage will be posted on-site indicating the closure.

Phase 2 Work Details

- Installation of sewers and a dewatering trench connecting to the underground pump station.
- **Clearway Construction Inc.** is the contractor

What To Expect During Construction

Impacts	There will be some construction related dust, noise and traffic delays. The City will make every effort to reduce the impacts. We appreciate your patience and cooperation.	
Work Hours	Work will occur between 7:00 a.m. to 7:00 p.m., Monday to Friday. Work after hours and on weekends will be limited and only on an as-needed basis.	
Traffic and Pedestrians	Roads	Intersection of Black Walnut Trail and Cactus Gate will remain closed throughout Phase 2 construction.
	Sidewalks	Sidewalk adjacent to the intersection will remain closed throughout Phase 2 Construction.
	Trails	The trail inside the parkette will continue to remain closed during construction.
Transit Service	MiWay Transit Bus #32 will be detoured onto Gumwood Road.	
Parking	To allow for bus turning there will be no on-street parking on the southeast side of Gumwood Road (i.e. in front of houses 3290, 3294, 3298, 3302, 3306, 3310, 3314, 3318, 3322, 3326, 3330, 3334, 3338, 3342, 3346, 3350, 3354, 3358, 3362, 3366, 3370, 3374, 3378, 3382, 3386, 3390) and at the bend of Gumwood Road (ie. in front of house 3313). Parking Enforcement has been notified of these parking restrictions.	
Restoration Works	The parkette will be restored with sod and tree planting after construction has been completed.	
Utility Disruptions	Temporary disruptions to utilities (i.e. gas, hydro, water, telecommunications and cable TV) may be experienced. Every effort will be made to promptly restore service.	

Future updates will be provided should there be changes to the project.

Contact

The City encourages you to notify us if you have any special requirements, comments or issues.

Project Information:	General Inquiries:
Rebecca Huang Project Manager 905-615-3200, extn. 8341 rebecca.huang@mississauga.ca	Please call 3-1-1 public.info@mississauga.ca

Visit: www.mississauga.ca/construction

Thank you for your patience and cooperation during construction